



Lumbar fixation

SERIFLEX PEDICLE SCREW SYSTEM

Best articulations with a sophisticated system: The SERIFLEX pedicle screw system can be used in manifold cases regarding the lumbar and thoracic area of the spinal column.

The SERIFLEX system is a pedicle screw system with a convincing application due to its flexible use, simplicity and stability in the configuration area. All of the configurations result in an excellent surface clamping between the screw head and rod clip or eccentric disk of the lumbar or sacral plate thereby ensuring an optimal and stable fixation.

The SERIFLEX pedicle screw system comprises polyaxial and monoaxial pedicle screws that can be used for a wide range of indications - cannulated and laterally fenestrated. Screws, such as in case of osteoporotic

bones, can also be fixed with bone cement by means of the adaptable Bone Filler Adapter.

The flexible options of the SERIFLEX pedicle screw system as screw/rod or screw/plate system enable the user to make a free decision regarding the correct combination for the respective indication and circumstances during the surgery.

The SERIFLEX Side Loading Systems range consists of screws and rods and covers any of the current sizes and functions. The implants and instruments are supplied in a non-sterile package and well-placed on the set.

SERIFLEX, Pedicle Screws



polyaxial, cannulated

Article No.	Sizes	Article No.	Sizes	Article No.	Sizes
700.103.655.230	Ø5.5 x 30mm	700.103.665.230	Ø6.5 x 30mm	700.103.665.260	Ø6.5 x 60mm
700.103.655.235	Ø5.5 x 35mm	700.103.665.235	Ø6.5 x 35mm	700.103.675.235	Ø7.5 x 35mm
700.103.655.240	Ø5.5 x 40mm	700.103.665.240	Ø6.5 x 40mm	700.103.675.240	Ø7.5 x 40mm
700.103.655.245	Ø5.5 x 45mm	700.103.665.245	Ø6.5 x 45mm	700.103.675.245	Ø7.5 x 45mm
700.103.655.250	Ø5.5 x 50mm	700.103.665.250	Ø6.5 x 50mm	700.103.675.250	Ø7.5 x 50mm
700.103.655.255	Ø5.5 x 55mm	700.103.665.255	Ø6.5 x 55mm	700.103.675.255	Ø7.5 x 55mm
				700.103.675.260	Ø7.5 x 60mm

SERIFLEX, Pedicle Screws



polyaxial

Article No.	Sizes
700.103.645.030	Ø4.5 x 30mm
700.103.645.035	Ø4.5 x 35mm
700.103.655.030	Ø5.5 x 30mm
700.103.655.035	Ø5.5 x 35mm
700.103.655.040	Ø5.5 x 40mm
700.103.655.045	Ø5.5 x 45mm
700.103.655.050	Ø5.5 x 50mm
700.103.655.055	Ø5.5 x 55mm
700.103.665.030	Ø6.5 x 30mm
700.103.665.035	Ø6.5 x 35mm
700.103.665.040	Ø6.5 x 40mm
700.103.665.045	Ø6.5 x 45mm
700.103.665.050	Ø6.5 x 50mm
700.103.665.055	Ø6.5 x 55mm
700.103.665.060	Ø6.5 x 60mm
700.103.675.035	Ø7.5 x 35mm
700.103.675.040	Ø7.5 x 40mm
700.103.675.045	Ø7.5 x 45mm
700.103.675.050	Ø7.5 x 50mm
700.103.675.055	Ø7.5 x 55mm



polyaxial for repositioning

Article No.	Sizes
700.123.645.030	Ø4.5 x 30mm
700.123.645.035	Ø4.5 x 35mm
700.123.655.030	Ø5.5 x 30mm
700.123.655.035	Ø5.5 x 35mm
700.123.655.040	Ø5.5 x 40mm
700.123.655.045	Ø5.5 x 45mm
700.123.655.050	Ø5.5 x 50mm
700.123.655.055	Ø5.5 x 55mm
700.123.665.030	Ø6.5 x 30mm
700.123.665.035	Ø6.5 x 35mm
700.123.665.040	Ø6.5 x 40mm
700.123.665.045	Ø6.5 x 45mm
700.123.665.050	Ø6.5 x 50mm
700.123.665.055	Ø6.5 x 55mm
700.123.665.060	Ø6.5 x 60mm
700.123.675.035	Ø7.5 x 35mm
700.123.675.040	Ø7.5 x 40mm
700.123.675.045	Ø7.5 x 45mm
700.123.675.050	Ø7.5 x 50mm
700.123.675.055	Ø7.5 x 55mm



monoaxial, cannulated

Article No.	Sizes
700.203.655.230	Ø5.5 x 30 mm
700.203.655.235	Ø5.5 x 35 mm
700.203.655.240	Ø5.5 x 40 mm
700.203.655.245	Ø5.5 x 45 mm
700.203.655.250	Ø5.5 x 50 mm
700.203.665.230	Ø6.5 x 30 mm
700.203.665.235	Ø6.5 x 35 mm,
700.203.665.240	Ø6.5 x 40 mm
700.203.665.245	Ø6.5 x 45mm
700.203.665.250	Ø6.5 x 50mm
700.203.665.255	Ø6.5 x 55 mm
700.203.665.260	Ø6.5 x 60mm
700.203.675.235	Ø7.5 x 35mm
700.203.675.240	Ø7.5 x 40mm
700.203.675.245	Ø7.5 x 45mm
700.203.675.250	Ø7.5 x 50mm
700.203.675.255	Ø7.5 x 55mm
700.203.675.260	Ø7.5 x 60mm



monoaxial

Article No.	Sizes
700.203.645.030	Ø4.5 x 30mm
700.203.645.035	Ø4.5 x 35mm
700.203.655.035	Ø5.5 x 35mm
700.203.655.040	Ø5.5 x 40mm
700.203.655.045	Ø5.5 x 45mm
700.203.655.050	Ø5.5 x 50mm
700.203.665.040	Ø6.5 x 40mm

Article No.	Sizes
700.203.665.045	Ø6.5 x 45mm
700.203.665.050	Ø6.5 x 50mm
700.203.665.055	Ø6.5 x 55mm
700.203.665.060	Ø6.5 x 60mm
700.203.675.035	Ø7,5 x 35 mm
700.203.675.040	Ø7.5 x 40mm
700.203.675.045	Ø7.5 x 45mm

Article No.	Sizes
700.203.675.050	Ø7.5 x 50mm
700.203.675.055	Ø7.5 x 55mm



K-wires

Article No.	Sizes
800.100.005.050	Ø1.8 x 360mm trepanned - round
800.100.006.050	Ø1.8 x 360mm round - round
800.100.007.050	Ø1.8 x 480mm trepanned - round
800.100.008.050	Ø1.8 x 480mm round - round



Bone Filler Adapter

Article No.	Sizes
790.103.001.00	Ø7.8 x 52 mm



Bone Filler Guide for cannulated monoaxial screws

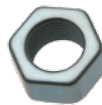
Article No.	Sizes
790.100.000.048	Ø5.5 x 30 mm
790.100.000.049	Ø5.5 x 35 mm

SERIFLEX, Rod System



Rod

Article No.	Sizes
700.103.700.040	Ø6.0 x 40mm
700.103.700.045	Ø6.0 x 45mm
700.103.700.050	Ø6.0 x 50mm
700.103.700.055	Ø6.0 x 55mm
700.103.700.060	Ø6.0 x 60mm
700.103.700.070	Ø6.0 x 70mm
700.103.700.080	Ø6.0 x 80mm
700.103.700.090	Ø6.0 x 90mm
700.103.700.100	Ø6.0 x 100mm
700.103.700.120	Ø6.0 x 120mm
700.103.700.140	Ø6.0 x 140mm
700.103.700.460	Ø6.0 x 460mm



Nut

Article No.	Sizes
700.103.400.001	M6 x 0.5



Rod clamp

Article No.	Sizes
700.103.700.001	Ø6.0



Cross connection

Article No.	Sizes
700.163.100.040	4.0 x 40mm
700.163.100.050	4.0 x 50mm
700.163.100.060	4.0 x 60mm
700.163.100.070	4.0 x 70mm
700.163.100.080	4.0 x 80mm



Rod extension

Article No.	Sizes
700.203.700.000	Ø6.0



Cross connector clamp set

Article No.	Sizes
700.163.100.000	Set
700.103.400.002	Cross Connector
700.103.100.001	Cross Connector clamp set

SERIFLEX, Plate System



Lumbar Plate standard light blue

Article No.	Sizes
700.103.101.120	1-level
700.103.100.013	2-level
700.103.100.014	3-level



Lumbar Plate fix yellow

Article No.	Sizes
700.103.100.021	1-level
700.103.100.022	2-level



Sacral Plate fix purple

Article No.	Sizes
700.103.101.011	1-level
700.103.101.012	2-level